



View Drone Footage

Harts Lane, Ardleigh
Q3 '23 Update

OVERVIEW

Crowdstacker investors lent £315,000 via a PDL Develop to part fund the construction of three beautifully built bungalows in the Essex countryside. The houses are now finished and on the market for sale.

Each property offers:

Three double bedrooms

Two bathrooms

Open plan kitchen/diner and separate sitting room

Utility room plus ample storage throughout

Energy efficient underfloor heating from air source heat pump

Parking for numerous vehicles

Garage

Electric charging point





[View the sales particulars here](#)

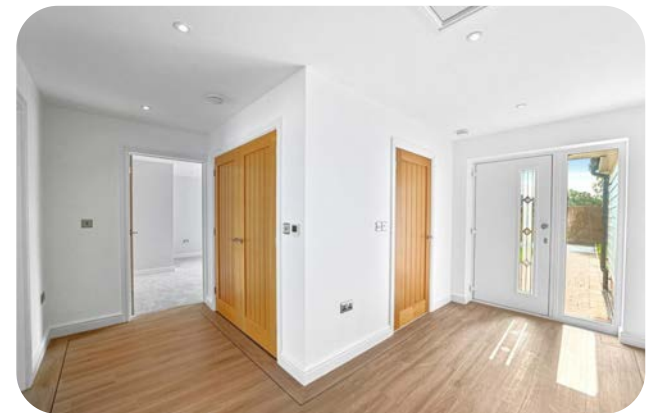




Orchard View

£795,000

[View the sales particulars here](#)





Silver Birch

£750,000

[View the sales particulars here](#)

